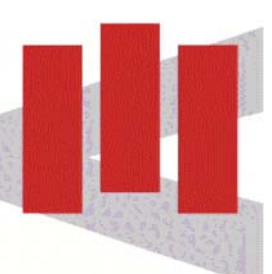


INQUADRAMENTO GENERALE Piano Primo

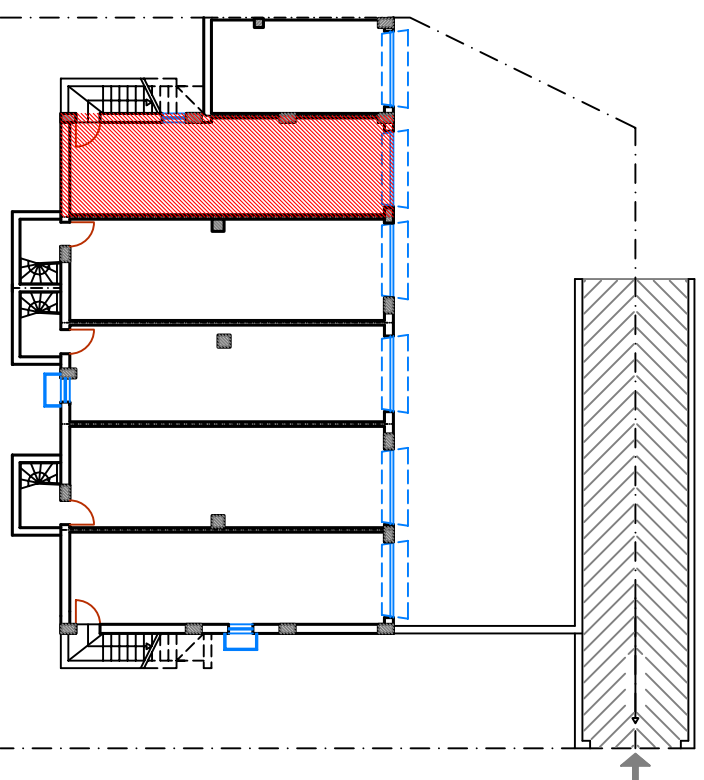
	Superficie Reale	%	Superficie Commerciale
Appartamento:	mq. 93,84	100%	mq. 93,84
Garage:	mq. 37,21	50%	mq. 18,61
Balconi:	mq. 13,83	50%	mq. 6,92
Scoperto:	mq. 47,59	10%	mq. 4,76
TOTALE SUPERFICIE COMMERCIALE			mq. 124,13



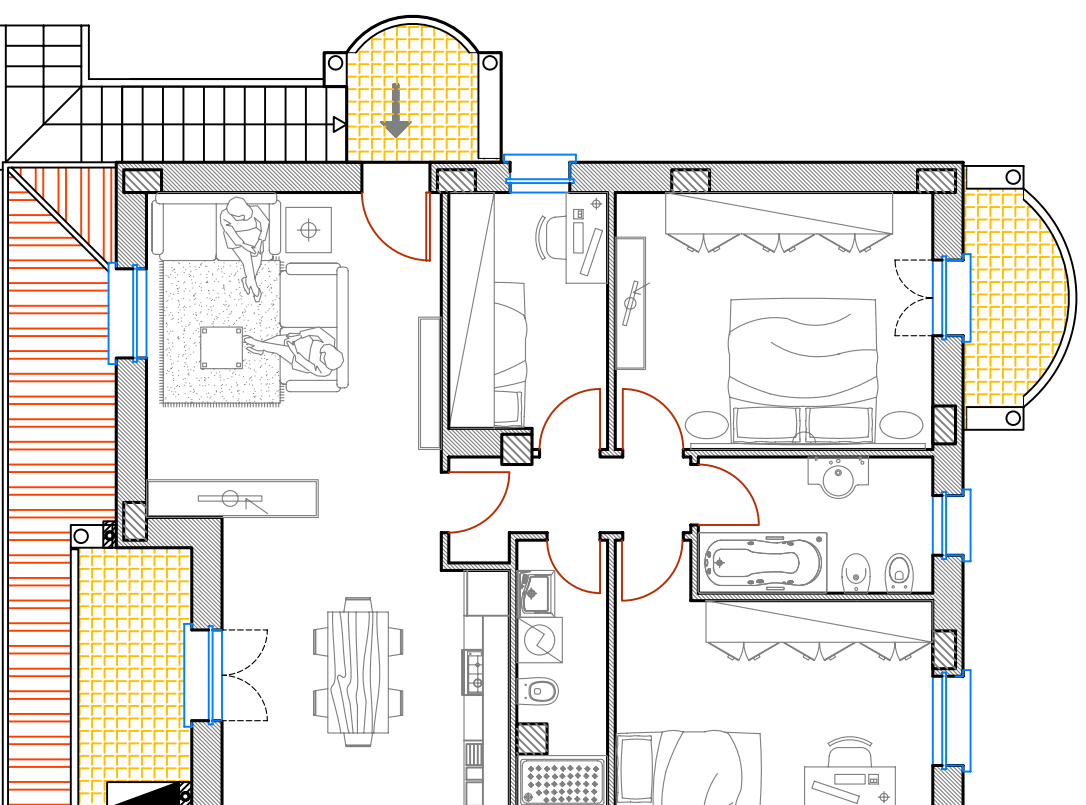
VESPRINI
C O S T R U Z I O N I

Viale Della Libertà, 107
61039 San Costanzo (PU)
Tel. 0721.950574 - 328.4196925 - 335.7814978

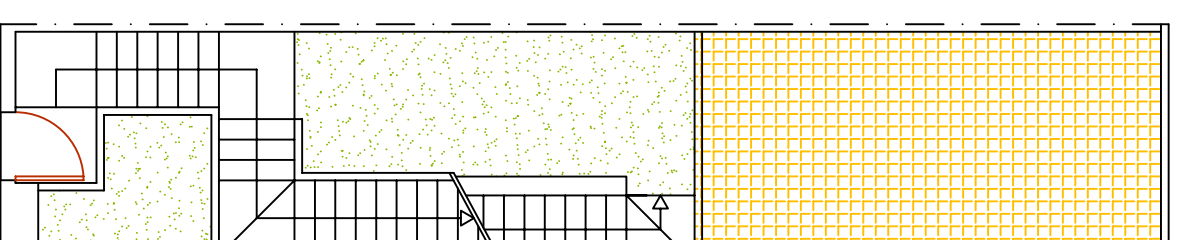
LOTTIZZAZIONE COMPARTO "C4"-SAN COSTANZO
LOTTO A6 - APPARTAMENTO N.4 - PIANO PRIMO LATO PESARO



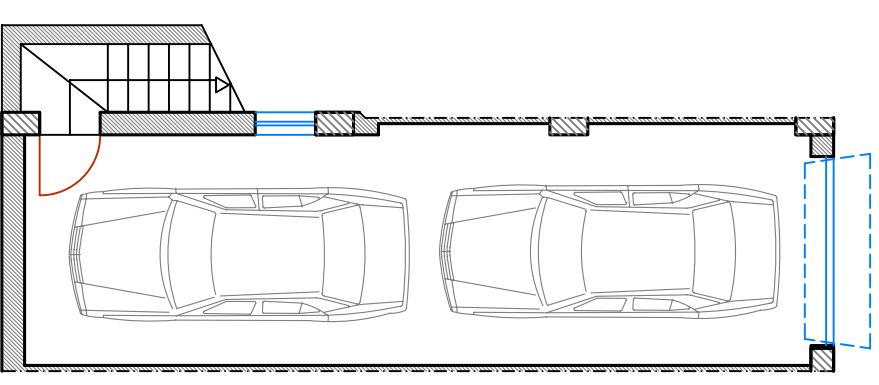
INQUADRAMENTO GENERALE Piano Interrato



PIANO PRIMO
Scala 1:100



PIANO TERRA
Scala 1:100



PIANO INTERRATO
Scala 1:100